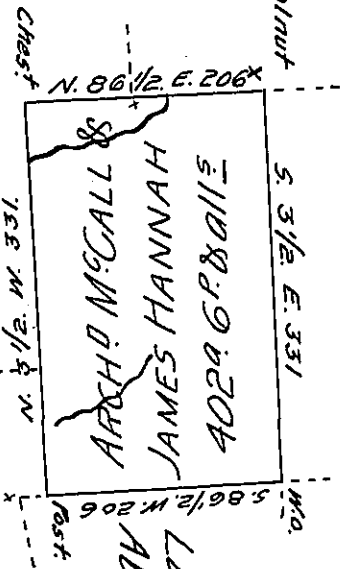


Sarah Campbell

Robert Nilson

Jos Shields



Land surrd for David Beans & Setled by Saml Robinson

Land Setled by Abraham Lemington

Surveyed to Arch<sup>d</sup> McCall and James Hannah on the 19<sup>th</sup> day of Feby 1807,  
 the above described tract of Land Containing four hundred and two Acres and  
 six perches & the allowance of six Cent & 1/2 Situate in Sugar Creek Town-  
 ship, Armstrong County, N. W. of the Allegheny River on the Waters of the long  
 Run. By Warrant of 30<sup>th</sup> April 1806.

Geo. Ross, D. S.

To Saml Cochran, Esq<sup>r</sup> S. G.

IN TESTIMONY that the above is a copy of the original remaining on file in  
 the Department of Internal Affairs of Pennsylvania, made  
 conformably to an Act of Assembly approved the 16th day of  
 February, 1833, I have hereunto set my Hand and caused  
 the Seal of said Department to be affixed at Harrisburg,  
 this twenty-ninth day of December 1905.

*Geo. Ross*  
 Secretary of Internal Affairs.